

DISTRIBUTION BOX SRN

DESIGN AND APPLICATION:

The SRN distribution box is a sub-assembly of the ZW-2 coupler assembly used to connect individual railcar segments of the train high voltage heating systems in the railway standard used throughout Western Europe.

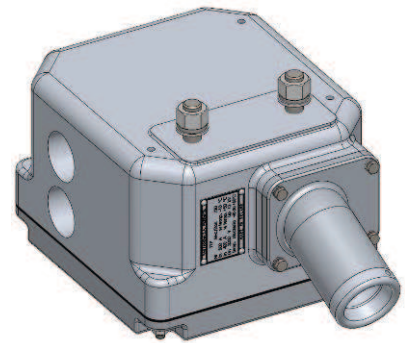
The box acts as a distribution or connection element in a train high-voltage heating system. The SRN box housing is made of an aluminium alloy and equipped with internal clamp for HV cables, mounted on the insulated base.

HV cables are mounted to the box clamp with M16 screws through eye terminals mounted on cables.

The box is fixed to the locomotive or railcar by means of two M16 bolts with nuts. The box is equipped with two internal M6 screws used to connect grounding of the plug wired with ASWP-D cable. The M10 earth terminal is led out to the outside.

The cable outlet contains the double choke sealing suitable for a specific cable cross-section (185 or 95 mm²).

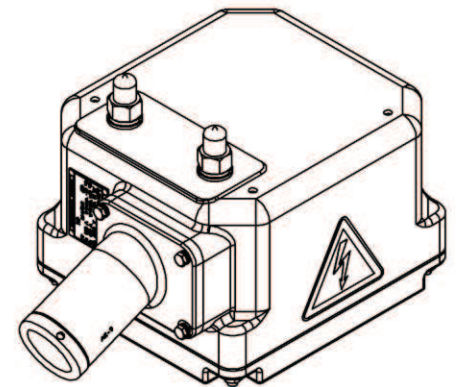
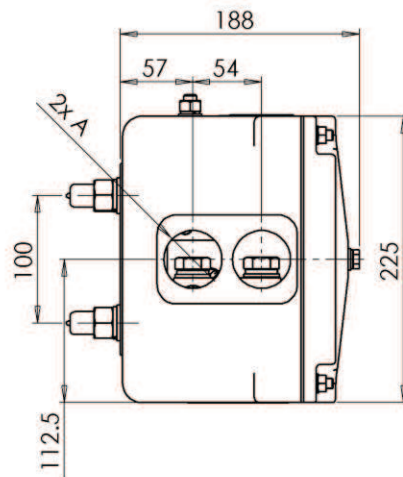
Weight – 10 kg.



SRN DISTRIBUTION BOX VERSIONS:

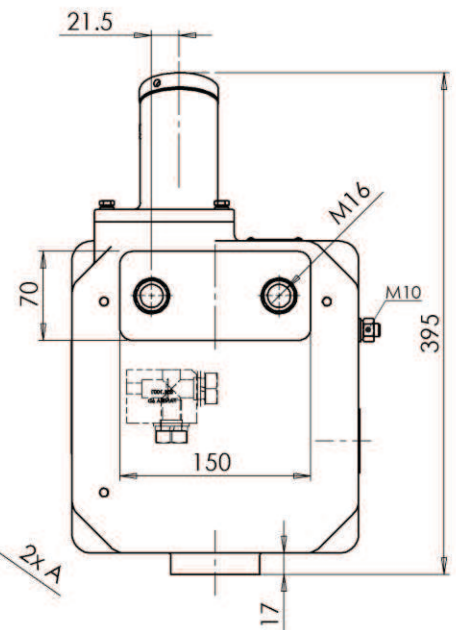
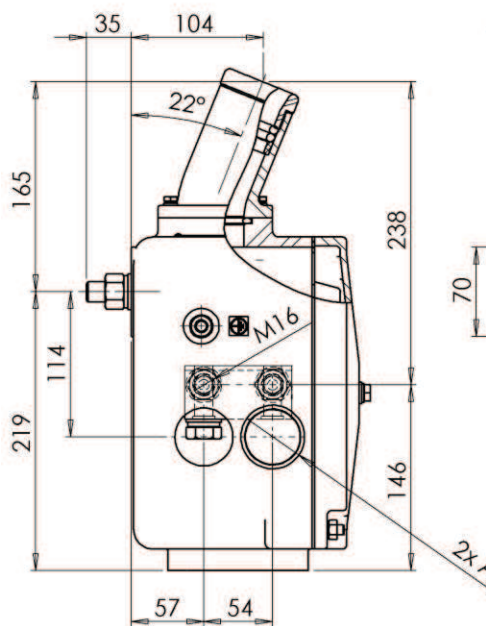
SRN-P/01 – for 185mm² cable, Pg36 connecting threads
 SRN-P/21 – for 95mm² cable, Pg36 connecting threads
 SRN-M/02 – for 185mm² cable, M50x1.5 connecting three
 SRN-M/22 – for 95mm² cable, M50x1.5 connecting three

PERMISSIBLE PERMANENT CURRENT LOAD		
Range of ambient temperatures:	CURRENT „I” (A)	
	for 185 mm ² cable	for 95 mm ² cable
below -10°C	800	267
-10°C ÷ 15°C	600	200
15°C ÷ 30°C	500	167
30°C ÷ 50°C	400	134
OTHER SPECIFICATIONS		
Rated voltage	3kV for direct or alternate current	
Test voltage	12kV for 1 minute	
Protection degree	IP55	



DOCUMENTS PROVIDED WITH THE PRODUCT:

Acceptance certificate 3.1.



Typ	A
SRN-P	Pg36
SRN-M	M50x1,5